

Overview

Power the work functions of your battery-electric machine with an energy-efficient hydraulic power pack from Danitech. Our power packs are configured with a permanent magnet motor, which can save you up to 15-20% battery consumption. This means you get extended battery life, or you can downscale the expensive battery pack and save money.

Our power packs work with a motor controller, which provides accurate variable speeds up to 5000 rpm depending on the torque demand. This allows for flow and pressure to be controlled according to the request from the functions on the machine, and only use the energy needed. If you need more than one function operative simultaneously, you might need two motor-pump units.

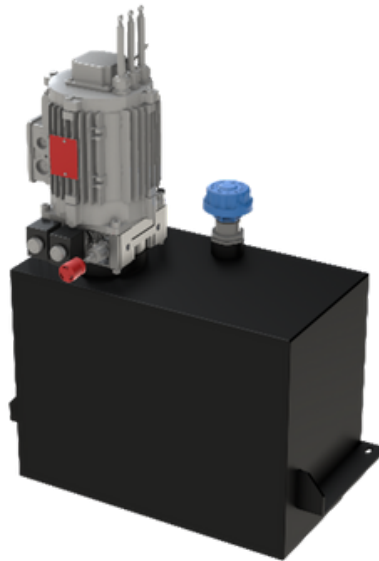
Highlights

- 95% motor efficiency
- 92% pump efficiency
- Horizontal and vertical mounting options
- Speed-controlled circuit with flows up to 45 l/min with one motor (higher with more)
- Custom-built hydraulic power pack for perfect fit and function
- Manufactured and tested in Denmark according to ISO 9001:2015 and ISO 14001:2015 standards
- All functions tested and executed with oil cleaned down to 3 µm. Can be documented

How to Buy

Configure your solution with our application specialists and get a quote

infodk@danitech.com
+45 76 34 23 00
Danitech.com



Tech Specs

Electric motor

- 2,75 – 4,4 kW, 1450 rpm, 24 or 48V,
- high-efficient permanent magnet motor with integrated encoder
- The nominal power can shortly be overloaded with 35%
- Larger motors are available on request

Pump

- 2,75 kW motor = 4 cc low noise fixed gear pump, Max. flow: 16 l/min, Max. pressure: 210 bar
- 4,4 kW motor = 6 cc low noise fixed gear pump, Max. flow: 30 l/min,
- Max. pressure: 210 bar

Manifold / Valves

- Application-specific, configurable with several modular valve functions
- Pictured here with a Danitech-manifold which include an integrated high-flow circuit, configurable regenerative- and dump function, and pressure/temperature sensor

Oil tank

- Application-specific, powder coated inside and outside
- Configurable with aluminum maintenance cover

Filters

- 10 µm abs return filter and 3 µm breather in 1 unit

Sensors

- Pressure and temperature sensors

Options

- Heat exchanger
- CAN-based motor controller

How to Buy

Configure your solution with our application specialists and get a quote

infodk@danitech.com
+45 76 34 23 00
Danitech.com